



INLAND NORTHWEST WOODTURNERS NEWSLETTER

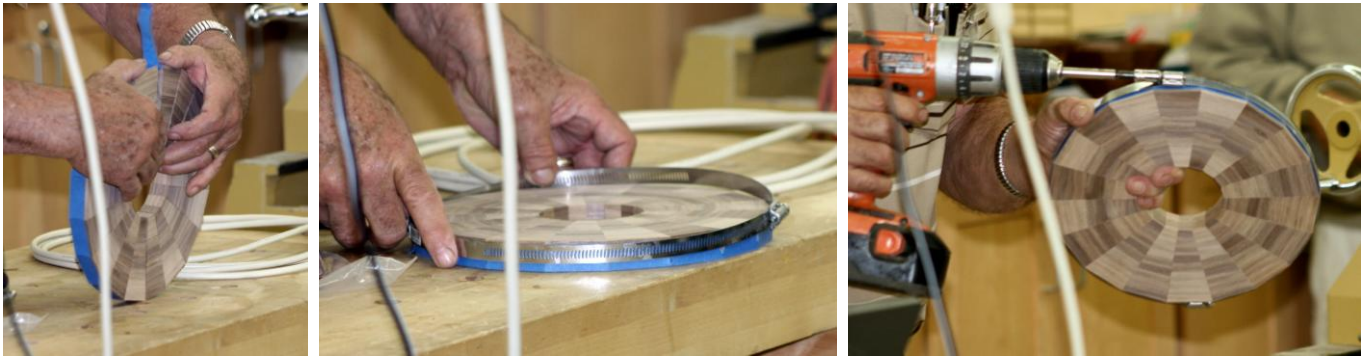
Next Meeting is Thursday
November 11, 2010, 7 PM at the
WoodCraft Store classroom,
N.E. corner of Sprague and
Sullivan (north side of the Fred
Meyer parking lot.

October Meeting 2010

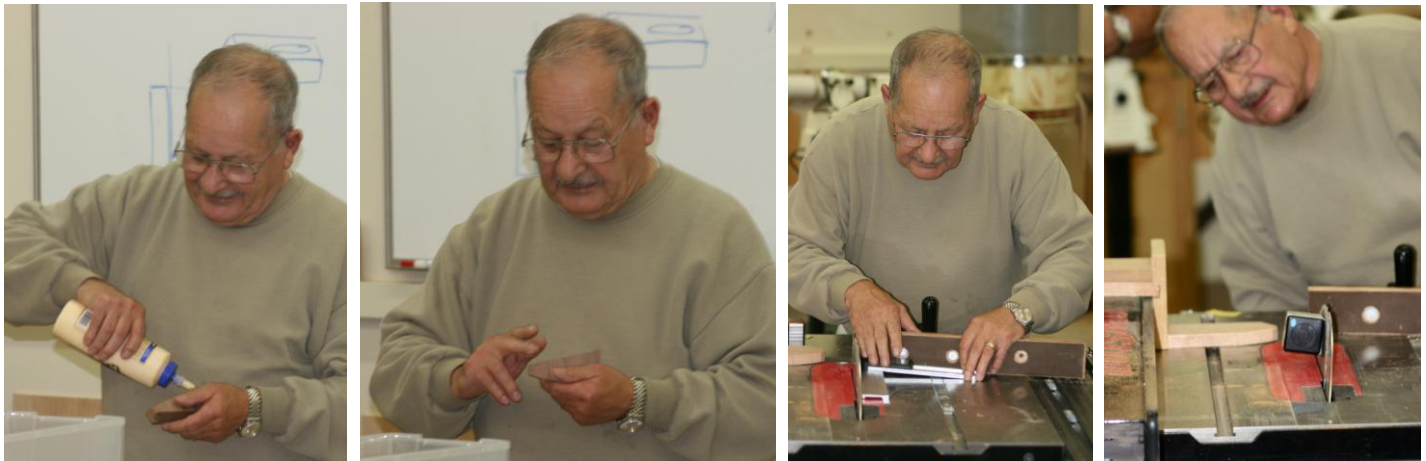
Thanks to Ron Gooley and Roy Behm for their demonstration, Segmented Turning II.



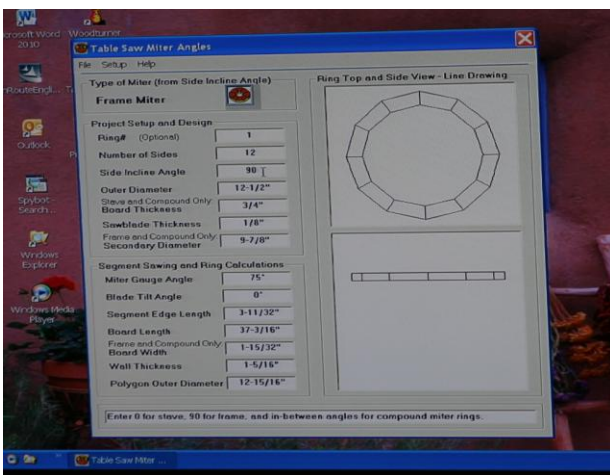
Get some help with that “other power tool”, check out www.turnewood.com for table saw miter angle calculators and other aids and ideas to get you up to speed on segmented work.



Tight joints are important, Ron tapes up and clamps several dozen pieces.



A little glue, but not too much, and follow the woodworkers #1 rule, measure twice, cut once.



Above, the calculator - right, a glued up feature ring makes the rounds for inspection.

Next Meeting:

Jimmy Clewes will be our guest demonstrator. Don't miss this guy, he's talented, entertaining and a great teacher. Remember, the meeting will be on **Thursday, November 11** instead of our regular first-Thursday time.

Thursday, December 2 – Christmas Party, turned gift exchange, top collection and spinning contest. The tops will go to kids spending the holidays in the hospital so let's see a good turn out.

Members Gallery/Sharing Table:



Man made pieces, or Mother Nature's help. Both beautiful.



Everett's laminated beam. Eric's mango bowl. Bob & Virginia went to Vegas to see Jimmy Clewes live in his shop and came home with these graceful goblets.



Eric Baumgartner and Ben Carpenter brought some beautiful work up from Moscow, figured maple and mystery wood. Bill Eller is checking it out,



“... elm, yup it’s elm.”

Have a wood day, see you in November.

Chad Gladhart, Club Secretary